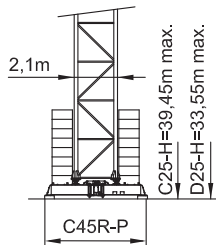
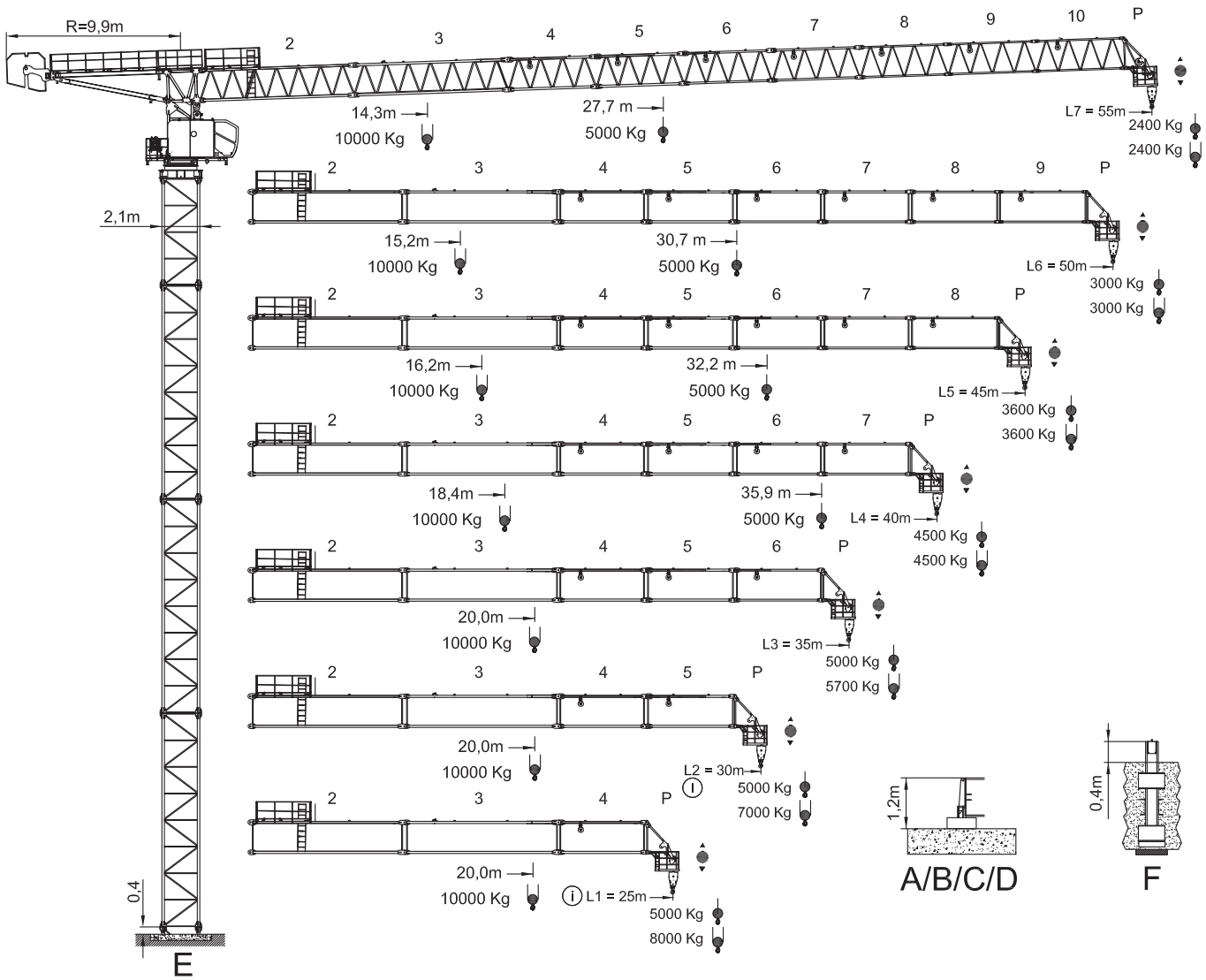


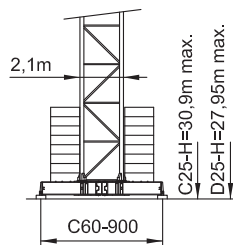
Sáez

SLH 205

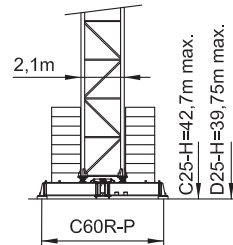
max. Ausladung:	55,00 m
Spitzenlast:	2.600 kg
max. Traglast:	10.000 kg
max. Hakenhöhe:	99,65 m



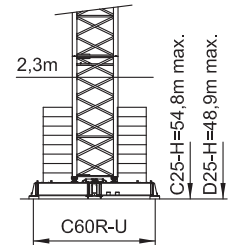
A



B



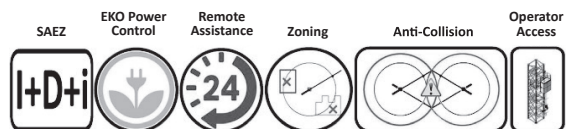
C



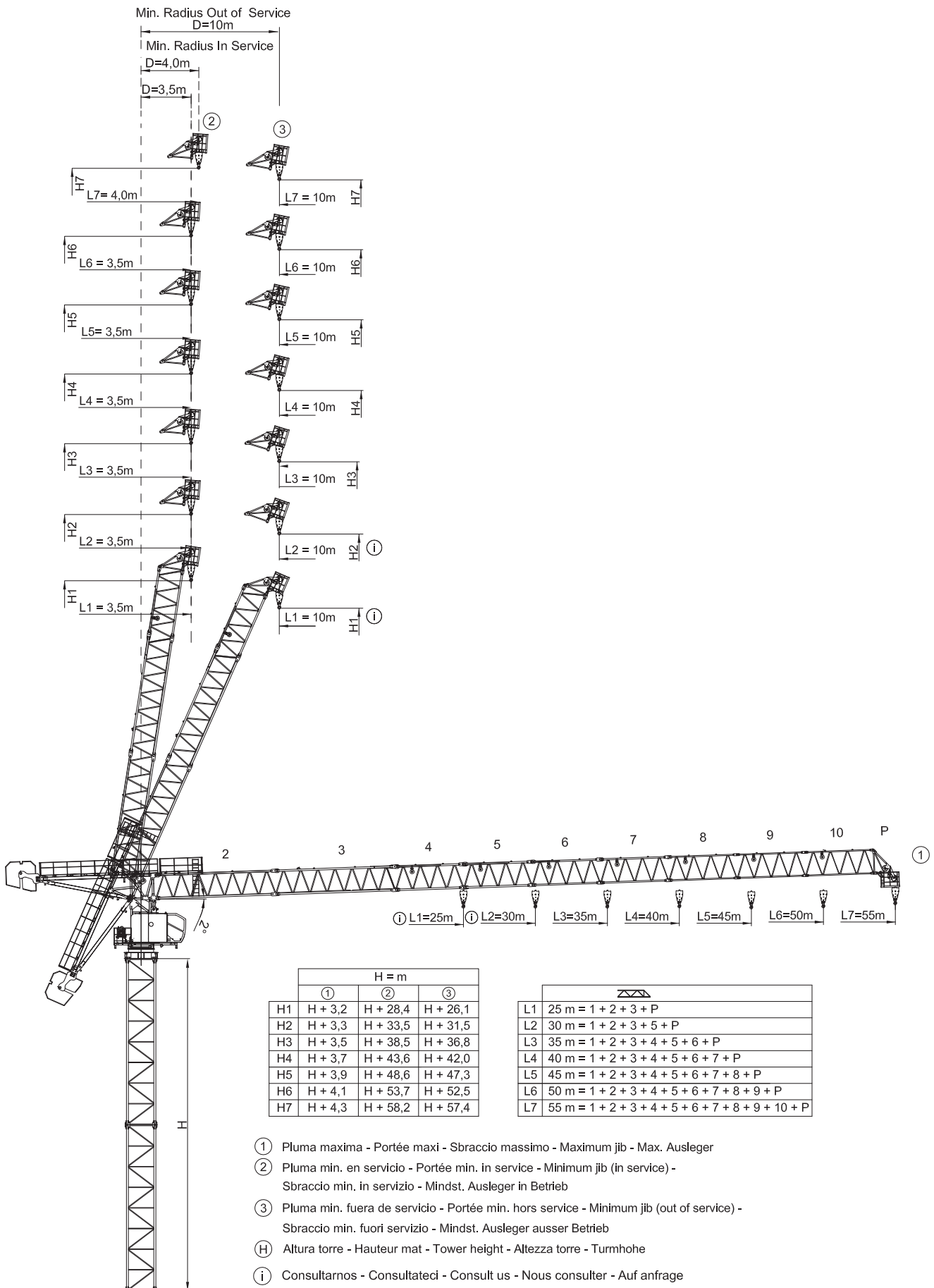
D



EN 14439-FEM 1005- C25 - D25



Angaben gemäß Hersteller. Angaben und Informationen ohne Gewähr. Irrtum und Änderung vorbehalten. Haftung ausgeschlossen. Oktober 2022.



Angaben gemäß Hersteller. Angaben und Informationen ohne Gewähr. Irrtum und Änderung vorbehalten. Haftung ausgeschlossen. Oktober 2022.

Lastkurven / Load diagrams

55 m

Max. load	10	15	20	25	30	35	40	45	50	55	m
27,7m	5000	5000	5000	5000	4420	3910	3360	2990	2680	2400	Kg
29,0m	5000	5000	5000	5000	4840	4280	3690	3290	2940	2600	Kg Superlift
14,3m	10000	9560	7230	5600	4430	3920	3370	3000	2680	2400	Kg
14,3m	10000	9640	7840	6120	4850	4290	3690	3290	2880	2600	Kg Superlift

50 m

Max. load	10	15	20	25	30	35	40	45	50	m
30,7m	5000	5000	5000	5000	5000	4360	3850	3330	3000	Kg
34,1m	5000	5000	5000	5000	5000	4790	4230	3670	3300	Kg Superlift
15,2m	10000	10000	8060	6340	5140	4370	3860	3340	3000	Kg
16,6m	10000	10000	8290	6940	5630	4800	4090	3670	3300	Kg Superlift

45 m

Max. load	10	15	20	25	30	35	40	45	m
32,2m	5000	5000	5000	5000	5000	4610	4090	3600	Kg
36,1m	5000	5000	5000	5000	5000	5000	4490	3960	Kg Superlift
16,2m	10000	10000	8200	6520	5480	4610	4090	3600	Kg
16,5m	10000	10000	8980	7150	6010	5060	4490	3960	Kg Superlift

40 m

Max. load	10	15	20	25	30	35	40	m
35,9m	5000	5000	5000	5000	5000	5000	4500	Kg
39,7m	5000	5000	5000	5000	5000	5000	4950	Kg Superlift
18,4m	10000	10000	9340	7170	5960	5100	4500	Kg
20,0m	10000	10000	10000	7870	6540	5600	4950	Kg Superlift

35 m

Max. load	10	15	20	25	30	35	m
35,0m	5000	5000	5000	5000	5000	5000	Kg
35,0m	5000	5000	5000	5000	5000	5000	Kg Superlift
20,0m	10000	10000	10000	7820	6610	5700	Kg
21,3m	10000	10000	10000	8590	7260	6270	Kg Superlift

30 m

Max. load	10	15	20	25	30	m
30,0m	5000	5000	5000	5000	5000	Kg
30,0m	5000	5000	5000	5000	5000	Kg Superlift
20,0m	10000	10000	10000	8320	7000	Kg
21,7m	10000	10000	10000	9150	7700	Kg Superlift







25 m

Max. load	10	15	20	25	m
25,0m	5000	5000	5000	5000	Kg
25,0m	5000	5000	5000	5000	Kg Superlift
20,0m	10000	10000	10000	8000	Kg
21,7m	10000	10000	10000	8800	Kg Superlift




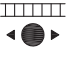
SL-SUPERLIFT Otras velocidades y características de funcionamiento – Variant speeds and service conditions –
Abweichende Geschwindigkeiten und Betriebsbedingungen – Vitesses et conditions de fonctionnement différentes
– Differenti velocità e condizioni di funzionamento – Нестандартные скорости и условия эксплуатации



Angaben gemäß Hersteller. Angaben und Informationen ohne Gewähr. Irrtum und Änderung vorbehalten. Haftung ausgeschlossen. Oktober 2022.

Antriebe / Mechanisms






									
50 Hp (37Kw) INV		LEBUS 715m  H. 660m Ø16				LEBUS 715m  H. 330m Ø16			
 	m/min	0 – 40 *	0 – 63	0 – 90	0 – 220	0 – 20 *	0 – 31,5	0 – 45	0 – 110
	Kg	5000	3000	2300	600	10000	6000	4600	1200
	Kw	37	37	37	37	37	37	37	37

* Max. hoisting speed with Superlift mode activated

			
		2 min. de 15° a 85° 2 minutes from 15° to 85°	
	Kw	22	
	r.p.m.	0 – 0,8	
	Nm	2 x 85	
	m/min	12 – 24	
	Kw	4 x 3	

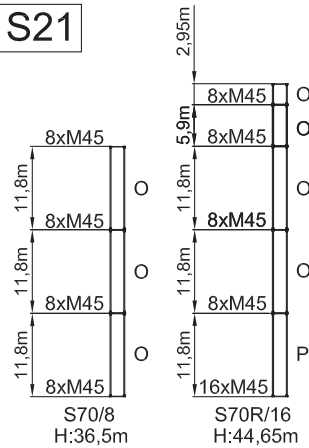
		400 V 50 Hz 60 Hz	100 m 4 x 35 mm ²
2000/14/CEE 2005/88/CEE	2006/95/CEE		

 37 Kw	74 Kw	145 kVA
---	-------	---------

- * Opcional / Optional / Opzionale
-  Elevación / Hoisting / Heben / Levage / Sollevamento
-  Elevación de pluma / Luffing / Ausleger-Einziehen / Relevage / Brandeggio
-  Orientación / Slewing / Schwenken / Orientation / Rotazione
-  Traslacion / Travelling / Schienenfahren / Translation / Traslazione
-  Cable / Rope / Seil / Câble / Fune

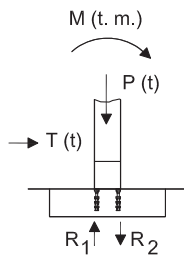
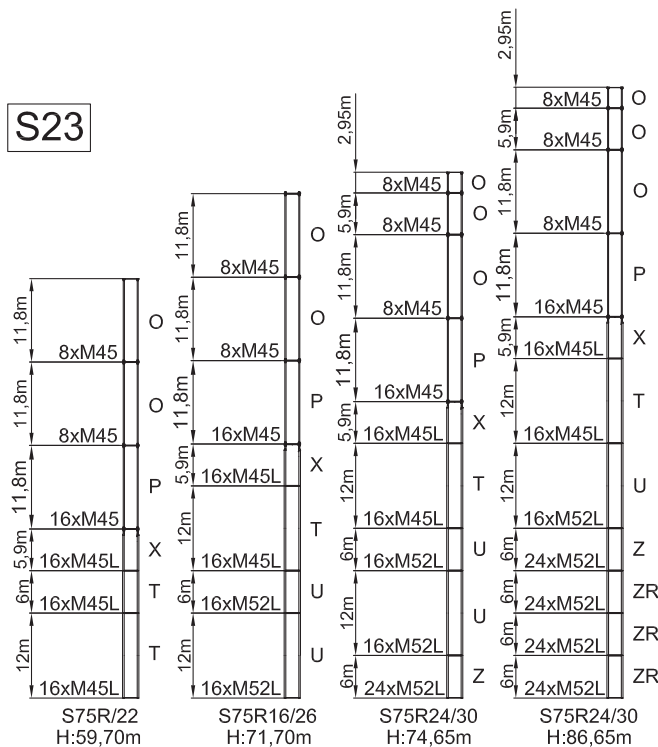
FEM 1005-C25/EN 14439 - Maste Eckdrücke / Mastsections

O = S21 8/8
 P = S21 16/8
 P = S21 16/16
 T = S2322 16/15 M45L
 U = S2326 16/16 M52L
 X = C2322/21
 Z = S2330 16/24 M52L
 ZR = S2330R 24/24 M52L

S21


C25	TH (m)	36,5	44,65
	M (T·m)	480,90	658,3
	T (t)	13,4	15,41
	P (t)	69,20	73,8
	R ₁ (t)	157	220,2
	R ₂ (t)	-191,6	-257,1

55 m


S23


C25	TH (m)	59,70	71,70	74,65	86,65
	M (T·m)	1021,9	1384,1	1489,9	1947,1
	T (t)	20,05	24,21	25,56	29,75
	P (t)	88,6	102,75	107,95	120,55
	R ₁ (t)	330,3	451,7	486,9	641,4
	R ₂ (t)	-374,6	-503,0	-540,8	-701,7

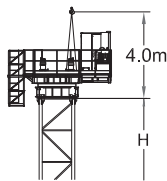
55 m

Angaben gemäß Hersteller. Angaben und Informationen ohne Gewähr. Irrtum und Änderung vorbehalten. Haftung ausgeschlossen. Oktober 2022.

Montage - Montage

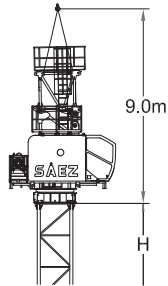
1st STEP
OPTION A

TURNTABLE
CABIN SUPPORT
9600 KG



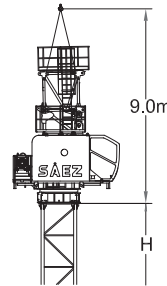
2nd STEP
OPTION A

TOWER TOP SECTION
JIB 1 SECTION
7600 KG



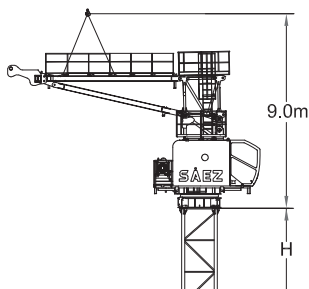
1st & 2nd STEP
OPTION B

TURNTABLE
TOWER TOP SECTION
CABIN SUPPORT
JIB SECTION 1
17000 KG



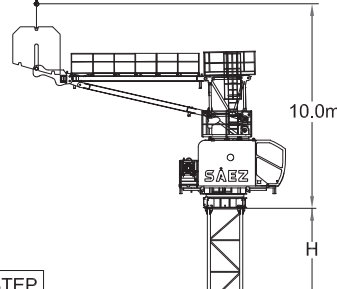
3rd STEP

COUNTERJIB
5000 KG



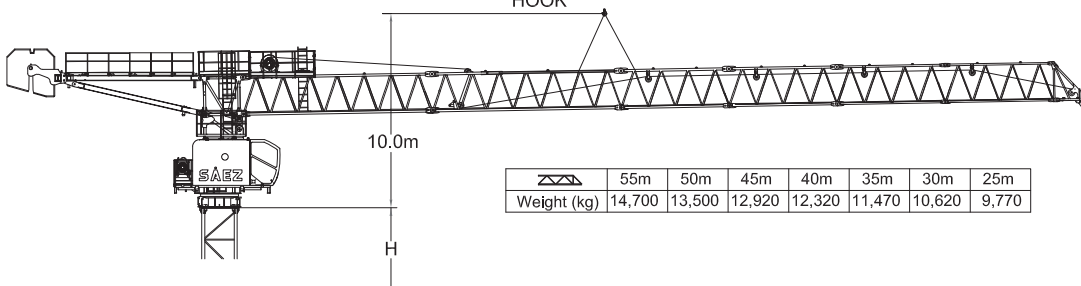
4th STEP

2 x COUNTER JIB BALLAST
2 x 5000 KG



5th STEP

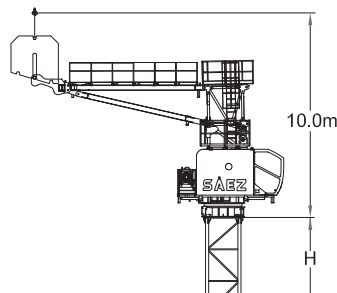
JIB SECTIONS 2, 3, 4, 5, 6, 7, 8, 9 & 10
JIB END
HOISTING UNIT
HOOK



	55m	50m	45m	40m	35m	30m	25m
Weight (kg)	14,700	13,500	12,920	12,320	11,470	10,620	9,770

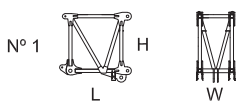
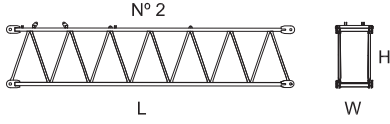
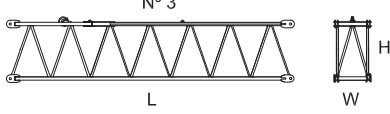
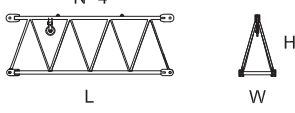
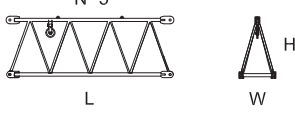
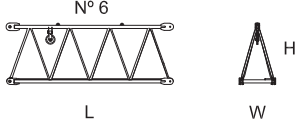
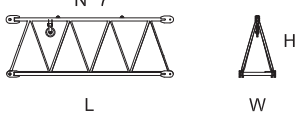
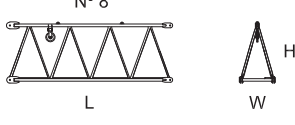
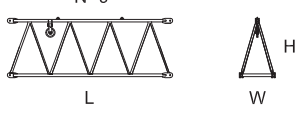
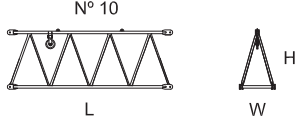

6th STEP

3 x COUNTER JIB BALLAST
3 X 5000 KG

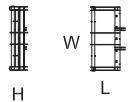
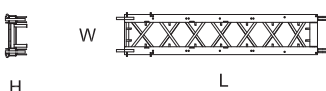
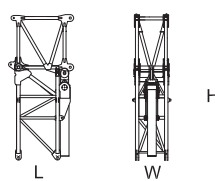

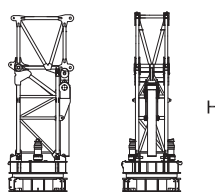
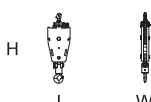
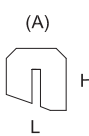
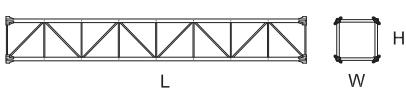


Angaben gemäß Hersteller. Angaben und Informationen ohne Gewähr. Irrtum und Änderung vorbehalten. Haftung ausgeschlossen. Oktober 2022.

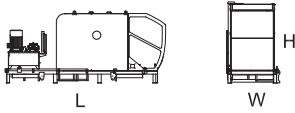
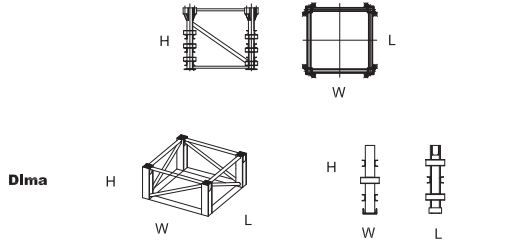
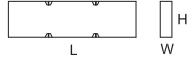
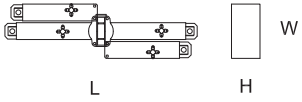
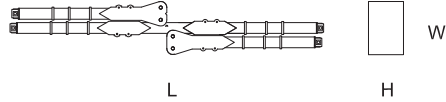
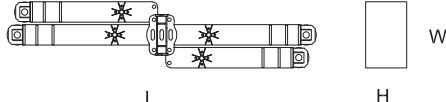

Abmessungen und Transport / Dimensions and transport

	L(m)	W(m)	H(m)	Peso(Kg)
Pluma tramo primero / Jib heel section / Ausleger-Anlenkstück / Pied de fleche / Settore articolato di braccio 	2,26	1,2	2,22	2600
Elemento intermedio de pluma / Intermediate jib section / Ausleger-Zwischenstück / Elément interm. de fleche / Spezzone di braccio N° 2 	9,02	1,2	2,08	3400
N° 3 	9,02	1,2	2,06	2400
N° 4 	5,25	1,2	1,93	1180
N° 5 	5,25	1,2	1,93	1180
N° 6 	5,21	1,2	1,92	885
N° 7 	5,21	1,1	1,92	885
N° 8 	5,18	1,1	1,92	885
N° 9 	5,16	1,1	1,85	600
N° 10 	5,16	1,1	1,85	580
Elemento final de pluma / Intermediate jib section / Ausleger-Zwischenstück / Elément interm. de fleche / Spezzone di braccio 	1,79	1,1	2,48	360

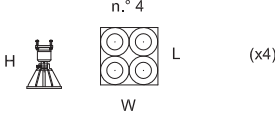
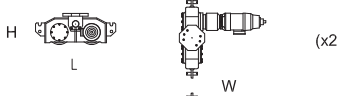
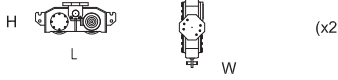
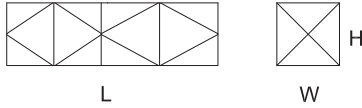
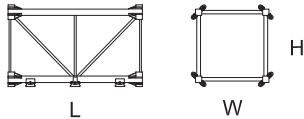
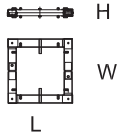
Angaben gemäß Hersteller. Angaben und Informationen ohne Gewähr. Irrtum und Änderung vorbehalten. Haftung ausgeschlossen. Oktober 2022.

	L(m)	W(m)	H(m)	Peso(Kg)	
Cesto Contrapluma / Counter-jib basket / Gegenausleger / Contre-fleche / Controbraccio 	1,80	3,32	0,96	2000	
Contrapluma / Counter-jib / Gegenausleger / Contre-fleche / Controbraccio 	6,52	1,24	0,67	1700	
Unidad de rotacion / Complete slewing unit / Drehbühne / Orientation / Rotazione   	2,30	1,35	5,10	7100	
Gancho / Hook / Lasthaken / Crochet / Gancio 	0,5	0,2	1,4	350	
Bloque de contrapeso / Counterweight blocks / Gegengewichtsblöcke / Bloc de contrepoids / Blocco di contrappeso 	A	2,2	0,51	2,2	5000
Elemento de torre / Tower section / Turmstück / Elément de mât / Elemento di torre 	O	11,8	2,27	2,27	5044
	O	5,9	2,27	2,27	2640
	O	3	2,27	2,27	1545
	P	11,8	2,27	2,27	5700
	Q	11,8	2,27	2,27	5900
	X	6	2,27	2,29	4000
	T	6	2,27	2,29	4550
	T	12	2,27	2,29	9100
	U	6	2,31	2,34	6200
	U	12	2,31	2,34	12400
	Z	6	2,31	2,55	7825
	ZR	6	2,31	2,55	7925

Angaben gemäß Hersteller. Angaben und Informationen ohne Gewähr. Irrtum und Änderung vorbehalten. Haftung ausgeschlossen. Oktober 2022.

	L(m)	W(m)	H(m)
Cabina y soporte / Cabin and platform / Kabine und wartungs / Cabine et support / Cabina e supporto 	5,2	1,75	2,4
Elemento de empotre / Foundation anchor / Fundamentanker / Pieds de scellement / El annegare 	S70/8 S70R/16 S75R16/20 S75R16/22 S75R16/26 S75R24/30 Dima	2,27 2,27 0,35 0,5 0,5 0,5 2,31	2,27 2,27 0,35 0,5 0,5 0,5 2,34
Bloque apoyo de base / Base support block / Grundballastblöcke / Bloc de appui de base / Blocco di appoggio alla base 	3,75	0,5	1,2
Base C45R-P / base C45R-P / Hauptträger für fundamentkreuz C45R-P / Base C45R-P / Base C45R-P 	6,9	1,94	1,1
Base C60-900 / base C60-900 / Hauptträger für fundamentkreuz C60-900 / Base C60-900 / Base C60-900 	8,66	1,47	0,9
Base C60R-P-U / base C60R-P-U / Hauptträger für fundamentkreuz C60R-P-U / Base C60R-P-U / Base C60R-P-U 	9,01	1,94	1,3
Bloque lastre de base / Base ballast block / Grundballastblöcke / Bloc de lest de base / Blocco di zavorra alla base 	4,5 5,8	0,51 0,4	0,9 1,5

Angaben gemäß Hersteller. Angaben und Informationen ohne Gewähr. Irrtum und Änderung vorbehalten. Haftung ausgeschlossen. Oktober 2022.

	L(m)	W(m)	H(m)	Peso(Kg)
<p>Niveladores / Levellers / Spindel pyramide / Niveleurs / Piedi regolabile</p> 	1,20	1,20	0,90	250
<p>Traslacion / Travelling bogies / Kranfahren / Traslation / Traslazione</p> 	1,15	1,25	0,45	505
	1,15	0,25	0,45	450
<p>Jaula de telescopaje tipo O 2.95 / Climbing cage type O 2.95 / Hydraulikbühne O 2.95 / Cage de telescopage type o 2.95/ Gabbia di montaggio O 2.95</p> 	7,35	2,75	2,75	7000
<p>Completa / Full / Vollständige/Complete / completa</p>				
<p>Estructura / Steel frame / Struktur/ Construction / Struttura</p>				5400
<p>Hidráulico y accesorios / Hydraulic and accessories / Hydraulik-und Zubehör / hydraulique et accessoires / Idrauliche ed accessori</p>				1600
<p>Tramo trepador Otr / Tower section Otr/ Turmstück Otr/ Elément de mâtire Otr/ Elemento di torre monolítico Otr</p> 	2,95 11,8	2,27 2,27	2,27 2,27	1475 4750
<p>Marco de trepado externo / Tie-frame/ Cadre d'encrage externe / Soplazo con ancoraggio esterno</p> 	2,31	2,31	0,26	950

OBENDREHER



40" HC x 7 - HBG 36 m



x 6 - HBG 36 m

Angaben gemäß Hersteller. Angaben und Informationen ohne Gewähr. Irrtum und Änderung vorbehalten. Haftung ausgeschlossen. Oktober 2022.